
The logo for 'Stella' features the word 'Stella' in a black, elegant cursive script. Below the 'e' and 'l' of 'Stella' is a red graphic element consisting of four interlocking circles arranged in a square pattern.

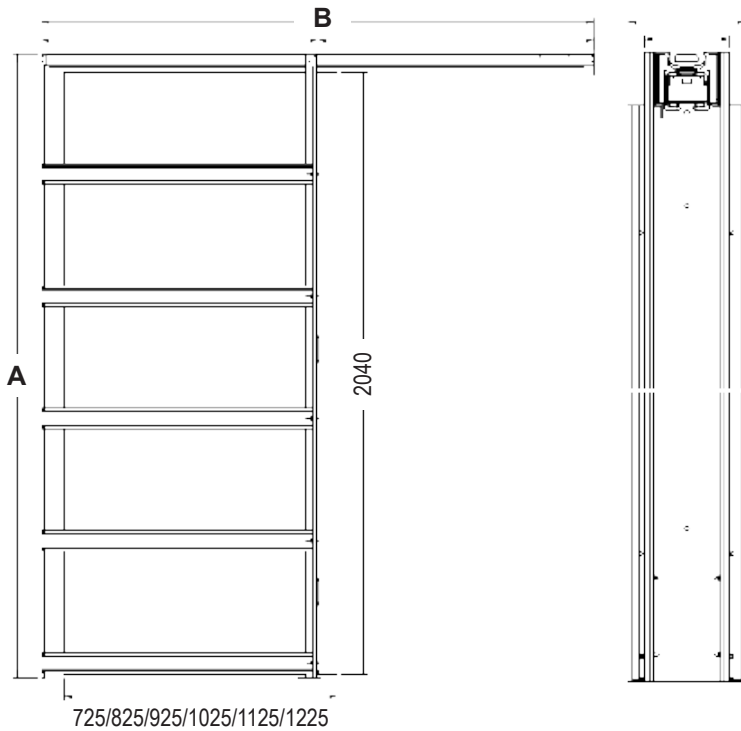
POCKET DOOR

ASSEMBLY INSTRUCTIONS

- FRAME
 - LIFTING ACCESSORY
-
-



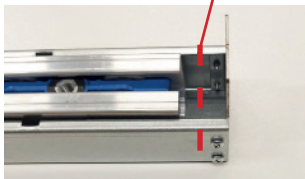
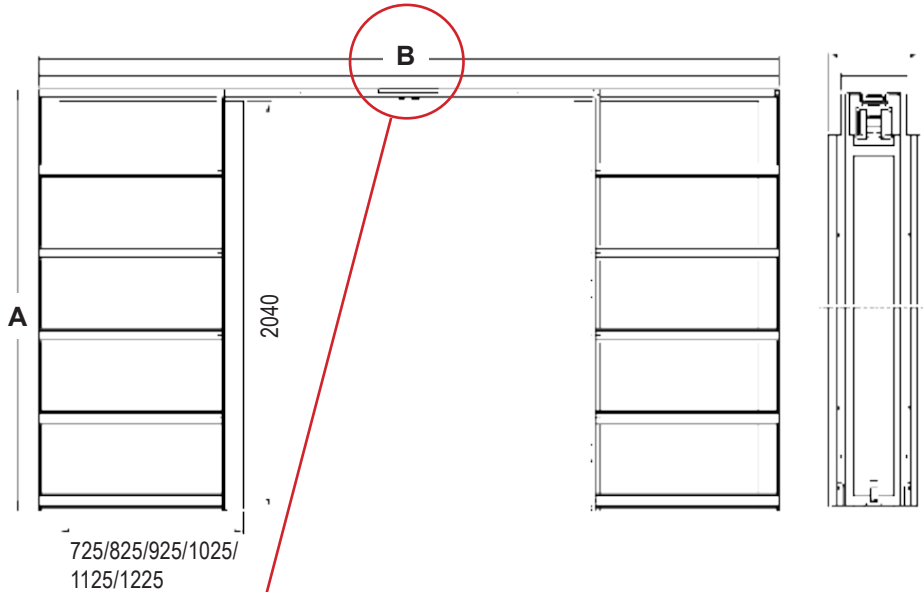
DIMENSIONS OF THE INSTALLATION FOR ONE DOOR



Note! Opening dimensions from the finished floor surface. Surface thickness must be taken into account when dimensioning the height.

	Door	A x B		Door	A x B
M7	2040 x 725	2114 x 1470	M10	2040 x 1025	2114 x 2070
M8	2040 x 825	2114 x 1670	M11	2040 x 1125	2114 x 2270
M9	2040 x 925	2114 x 1870	M12	2040 x 1225	2114 x 2470

DIMENSIONS OF THE INSTALLATION FOR DOUBLE DOORS



- From both standard-sized frame profiles, -20 mm is cut away from the place shown in the picture (not from the rail)
- The ends of the profiles will be connected with butt seam

Note! Opening dimensions from the finished floor surface. Surface thickness must be taken into account when dimensioning the height.

	Door	A x B		Door	A x B
M7	2040 x 725 x 2	2114 x 2900	M10	2040 x 1025 x 2	2114 x 4100
M8	2040 x 825 x 2	2114 x 3300	M11	2040 x 1125 x 2	2114 x 4500
M9	2040 x 925 x 2	2114 x 3700	M12	2040 x 1225 x 2	2114 x 4900



1

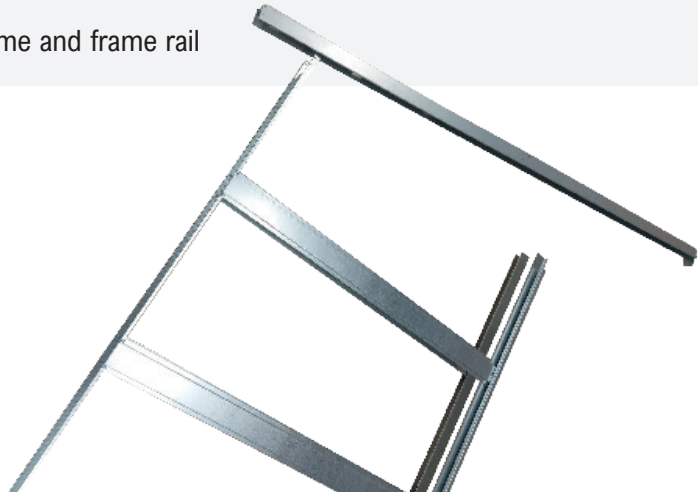
Stella pocket door individually packed.



- 66/92 mm = for 66 mm frame post with 13 mm plaster board on both sides
- 95/120 mm = for 95-96 mm frame post with 13 mm plaster board on both sides

2

Frame and frame rail



3

Fixing the rail to the frame (8 screws)





4

Frame ready to be installed



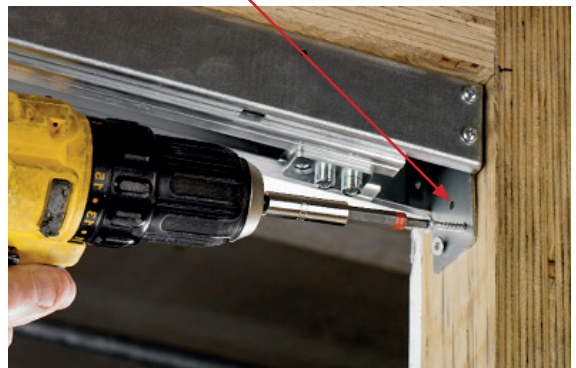
5

Attach the frame to the end of the solid wall (3 Screws)



6

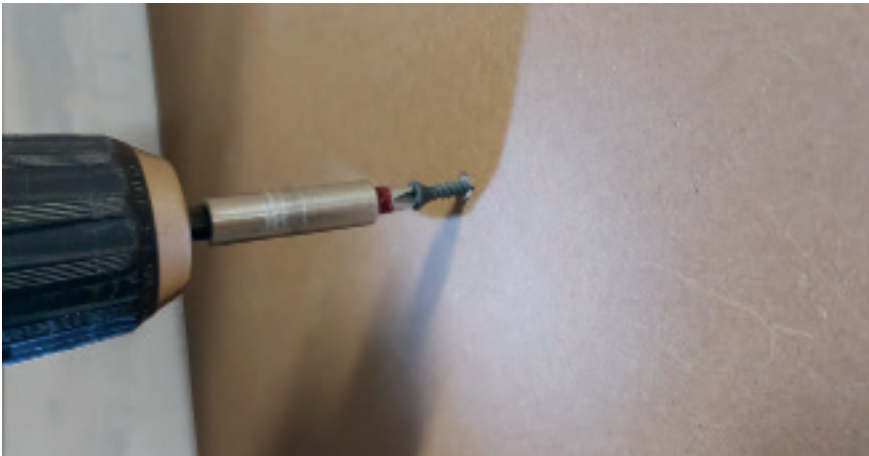
Attach the frame profile





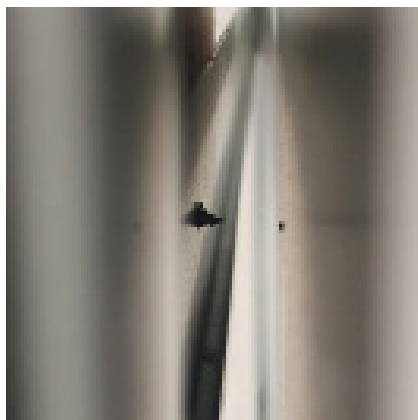
7

Placing the wall panels, drill marking holes with a 2,5 mm bit

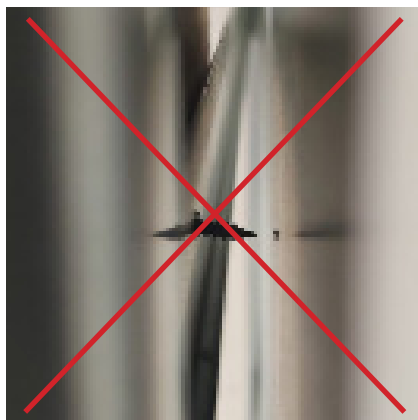




Plasterboard screws 3,5*19 mm 50 pcs included.



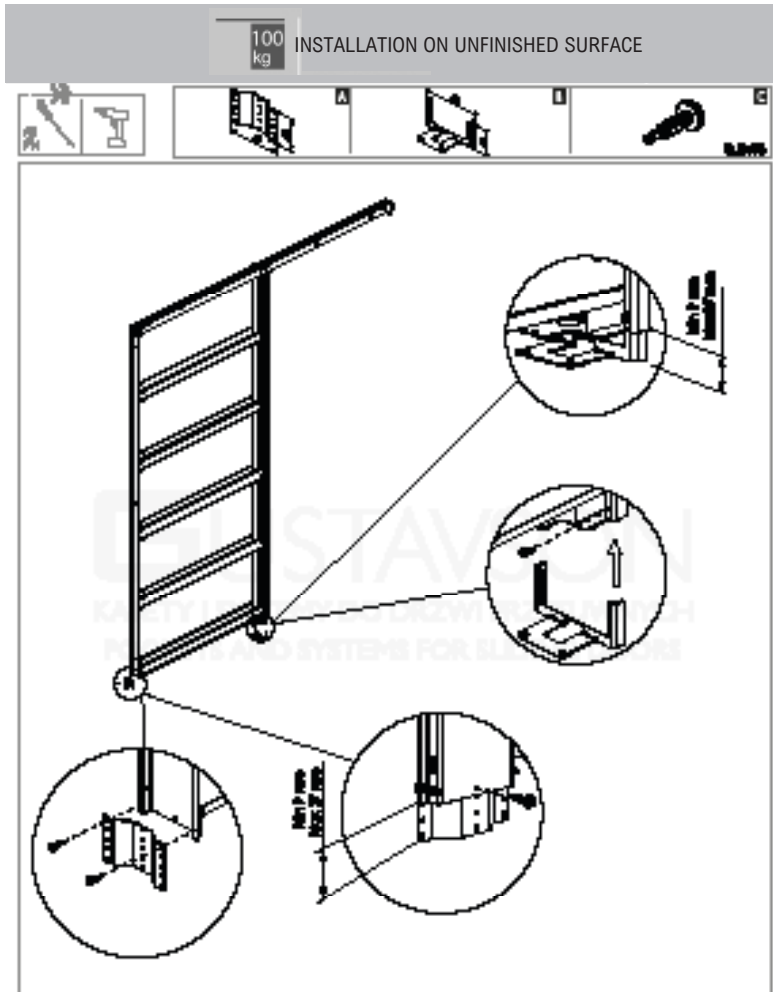
NOTE! SCREW THE SCREW HEAD FLUSH WITH THE SURFACE





8

Lifting accessory 9 - 27 mm (optional, not included)



9

Installation (optional, not included)

- Used when installing on an unpaved floor (for example concrete)
- Install the front and rear to the desired height (9-27 mm).
- Note! The desired height is added to the height measurement given for the opening



• Rear



• Front

Parts are adjusted to the desired height and fixed with the included screws.

Stella



POCKET DOOR

Sales:
Hitsaajankatu 24, 00810 Helsinki
puh. +358 (0)9 755 131

Orders:
tilaukset@carlocasagrande.fi
www.carlocasagrande.fi

Stock:
Lapinjärventie 77
07800 Lapinjärvi