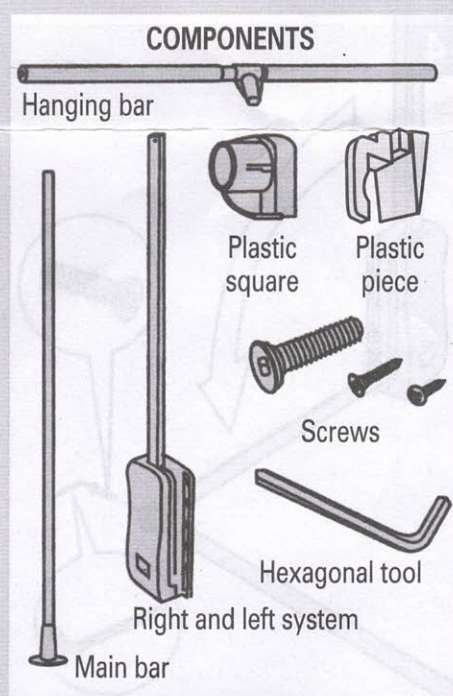
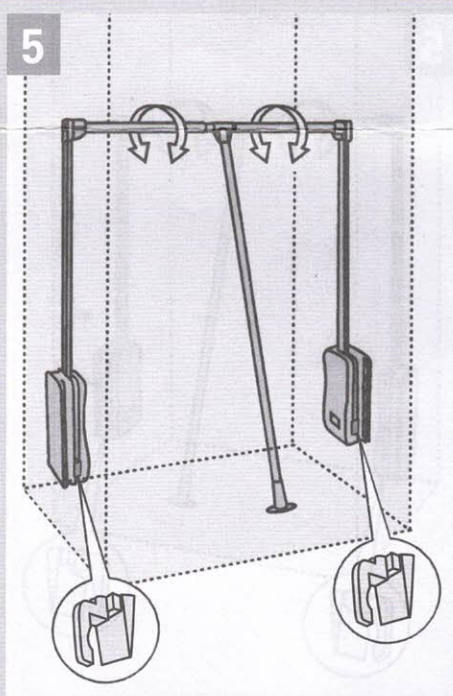
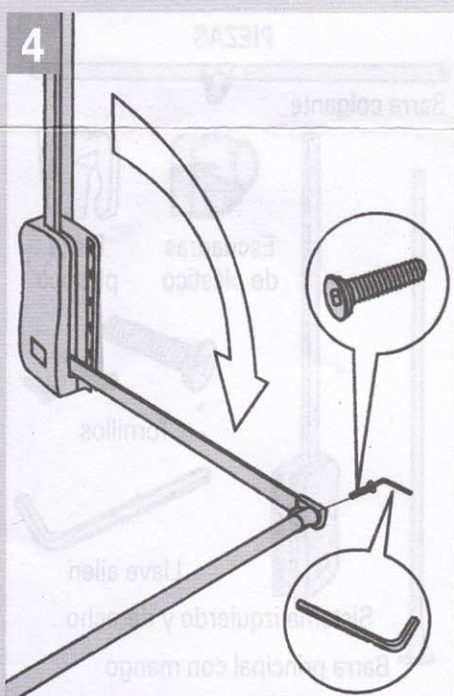
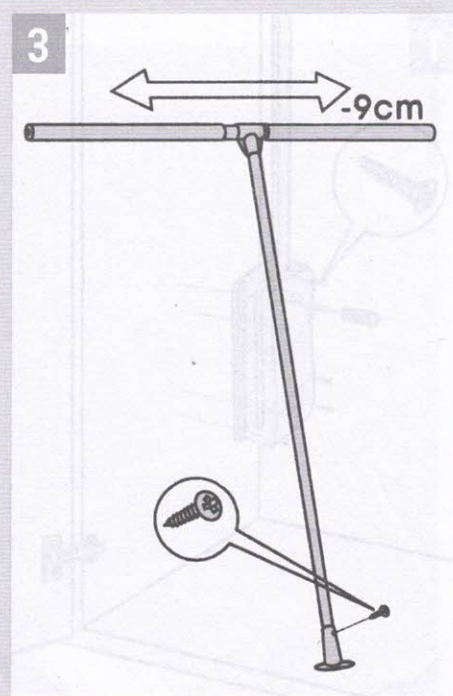
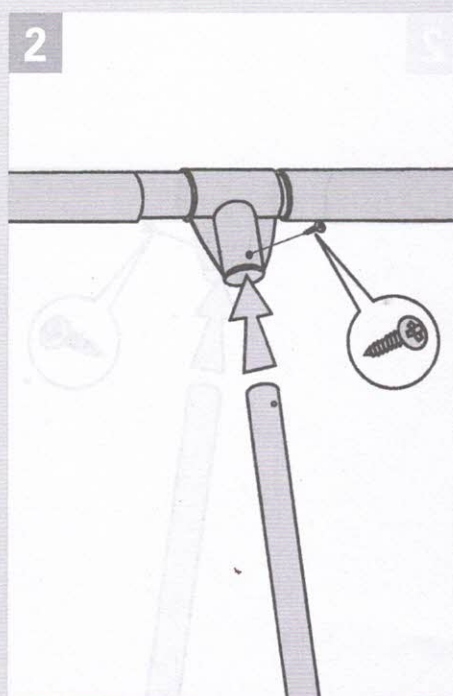
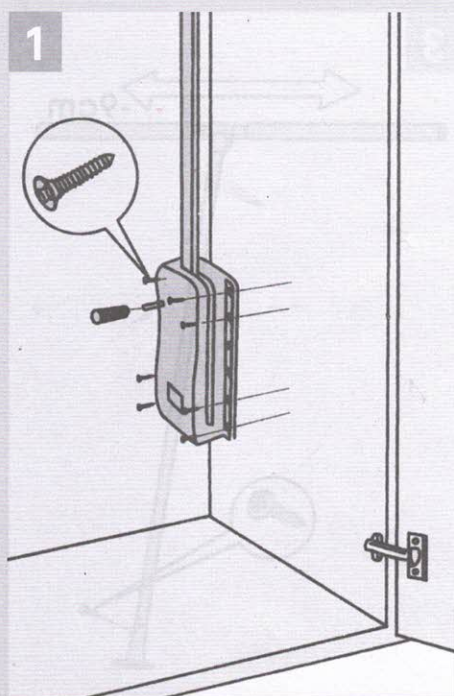


ASSEMBLY INSTRUCTIONS

CLOTHING HANGER: F25001/02/03/04/05/18



- 1 Screw at least 8 screws on each system, for an optimal result to use 12 screws.
- 2 Assemble the main bar to the holding one with M3 screws.
- 3 Fit the length of the hanging bar 9 cm. less than the total internal width of the wardrobe.
- 4 Open out the system bar and put the plastic square on both sides, using the specific utensil (as in the photo).
- 5 Place the hanging bar to the horizontal one and tuenit to the top to block it. Assembly complete. Put the plastic part a (as in figure 5) into the metal carcass to avoid damage when hanger is full.